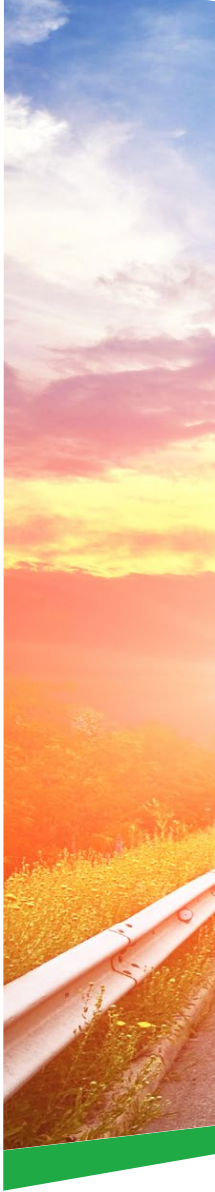




## SECURITY ON WHEELS SMART MOBILE TRANSPORTATION SOLUTION



Distributed by



# HIKVISION

### Headquarters

No.555 Qianmo Road, Binjiang District,  
Hangzhou 310051, China  
T +86-571-8807-5998  
overseasbusiness@hikvision.com

**Hikvision USA**  
T +1-909-895-0400  
sales.usa@hikvision.com

**Hikvision Italy**  
T +39-0438-6902  
info.it@hikvision.com

**Hikvision Singapore**  
T +65-6684-4718  
sg@hikvision.com

**Hikvision Europe**  
T +31-23-5542770  
saleseuro@hikvision.com

**Hikvision France**  
T +33(0)1-85-330-444  
info.fr@hikvision.com

**Hikvision Oceania**  
T +61-2-8599-4233  
salesau@hikvision.com

**Hikvision Middle East**  
T +971-4-8816086  
salesme@hikvision.com

**Hikvision Spain**  
T +34-91-737-16-55  
info.es@hikvision.com

**Hikvision Hong Kong**  
T +852-2151-1761

**Hikvision Russia**  
T +7-495-669-67-99  
saleru@hikvision.com

**Hikvision Poland**  
T +48-22-460-01-50  
poland@hikvision.com

**Hikvision Canada**  
T +1-909-895-0400  
sales.usa@hikvision.com

**Hikvision India**  
T +91-22-28469900  
sales@pramahikvision.com

**Hikvision UK**  
T +44-1628-9021-4  
support.uk@hikvision.com



# SECURITY ON WHEELS SMART MOBILE TRANSPORTATION SOLUTION

 smart solution **2.0**

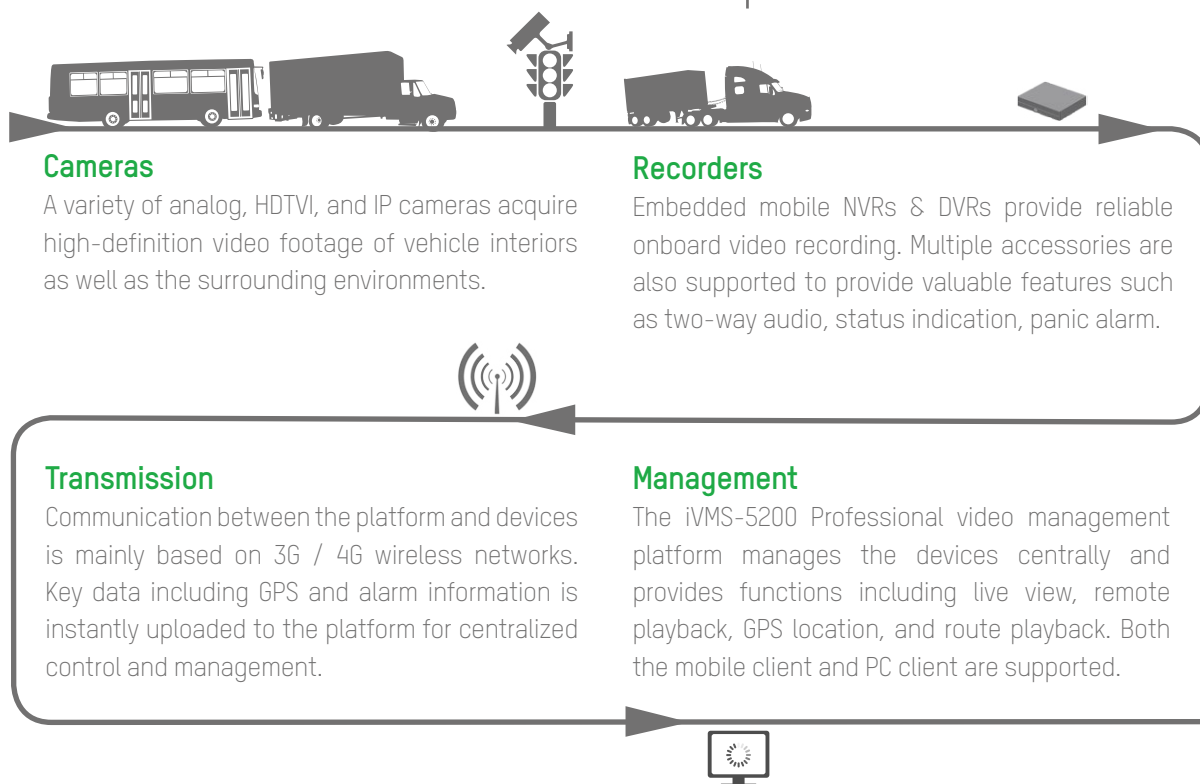
MOBILE





Safe public transportation is a worldwide concern, especially responding quickly to traffic accidents and guarding against potential terrorist attacks on transportation facilities. In addition, increased passenger loads and more complex transportation hubs call for a central management system to safeguard against unlawful activities such as pickpocketing, disorderly behavior, and so on.

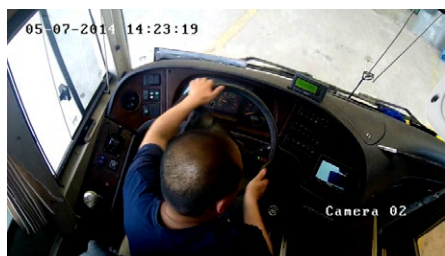
## Hikvision Smart Mobile Transportation Solution





## ■ Mobile HD Video Monitoring

Comprehensive high-definition video monitoring helps authorities to deal with situations such as pickpocketing, traffic accidents, terrorism, disorderly behavior of passengers and drivers, and more. Pictures and videos can be exported to law enforcement for investigation.



Supervising driver's behavior



Monitoring entrance with intrusion detection



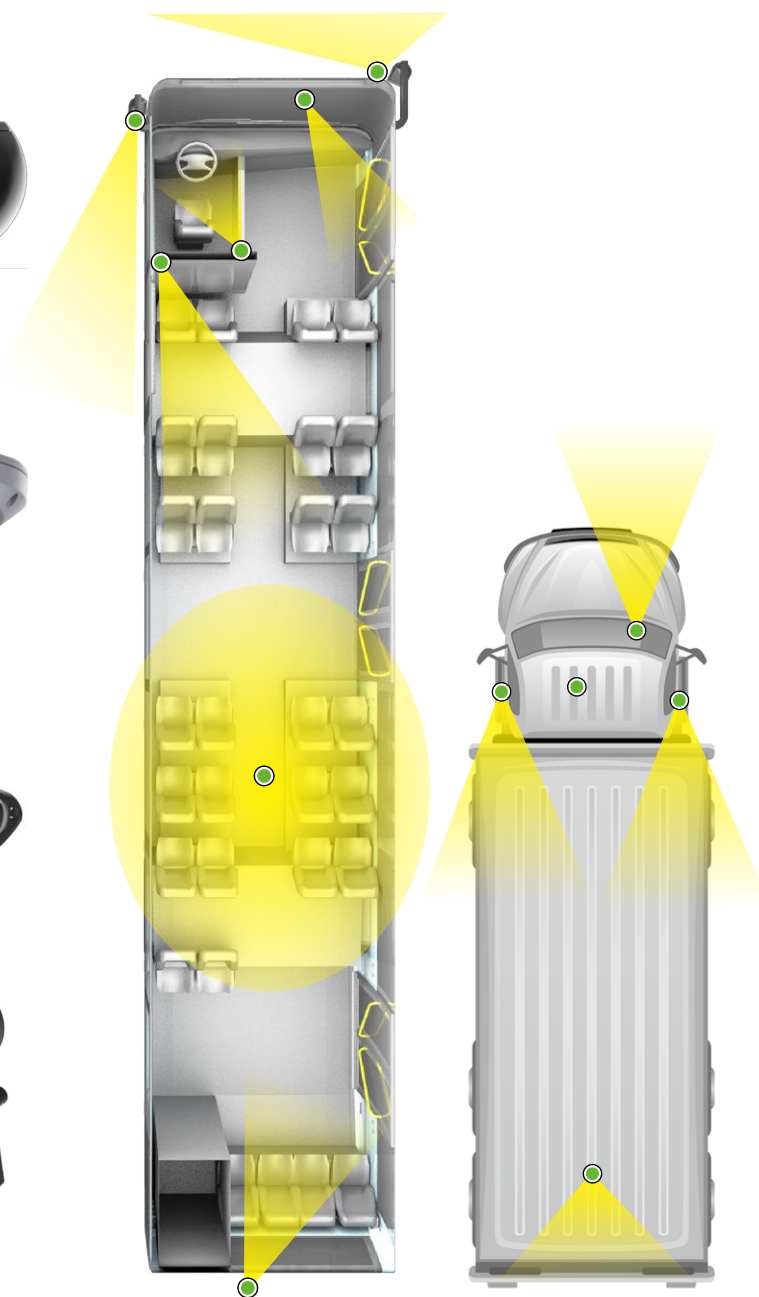
Viewing vehicle passengers from different angles



Monitoring traffic outside of the vehicle



Dedicated fisheye camera and on-board recorder with LCD monitor offer side view to prevent dead-angle on backing a vehicle.

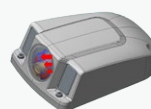


## ■ Rich Mobile-Dedicated Products to Satisfy Every Transport Requirement



Up to 1920x1080 resolution with mobile IP products

### NETWORK



Special heating module and defog for outer-vehicle cameras



- High-reliability storage with die-cast aluminum design
- Fully enclosed with dual-protected HDD and patented aviation airbag
- Reinforced camera materials parts with silicone pad for shock absorption
- Support multiple specialized connectors for vehicles or trail transport.

\* Customization may required.



Dual-card design and zero channel combine to optimize wireless transmission

### HDTVI



### ANALOG

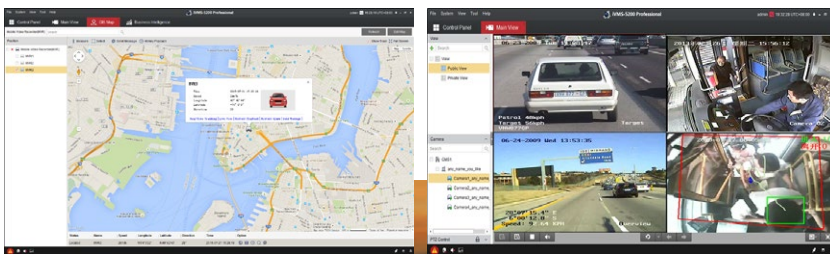


- Wide range isolated power supply to adapt sudden power voltage change;
- Support low battery voltage detection;
- Using super capacitor to ensure normal shutdown;
- Overvoltage protection against shocks (pulse filtering)



## Real-time Tracking

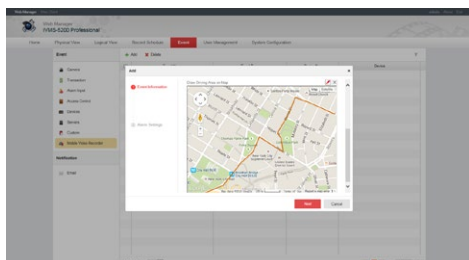
Tracking in real time helps authorities inspect onboard situations.





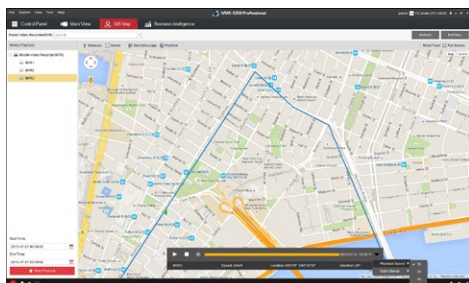
## Exception Alarms

Smart features such as fence crossing alarms and deviation alarms can help authorities take effective action to handle security events.



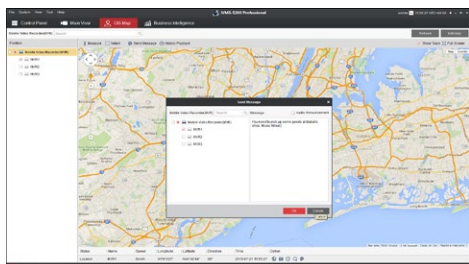
## Routine Playback

This tool enables authorities to evaluate each vehicle's efficiency.



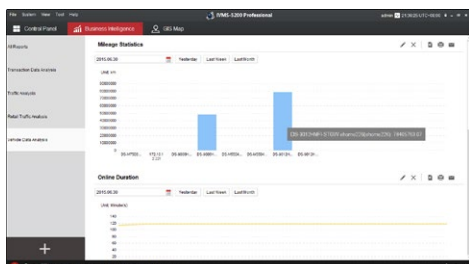
## Instant Messaging

This function allows the security center to communicate directly with the vehicle.



## Analytic Reporting

Reports on vehicle mileage, traffic, and timing provide intelligence that helps authorities make smart decisions to enhance revenue.

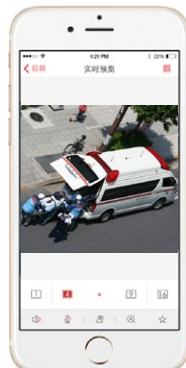




## ■ Remote Monitoring and Video Push Alerts from Anywhere



Traffic Accident



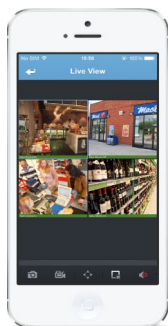
Video Push



Central Platform

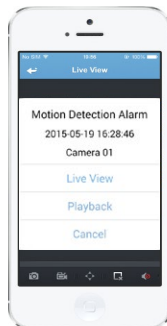
A connection between the iVMS-5260 mobile client and the central platform allows real-time video from cellphone cameras to be sent to the central platform and then transmitted to more clients.

## ■ iVMS 5260: An Easy and Effective Mobile Client



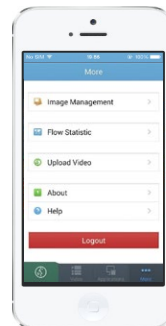
### Live View/Playback

- View real-time video from the cameras
- PTZ control
- Turn on / off the audio in live view
- Manual recording
- Search by date / storage mode



### Alarm Notification

- Receive and display alarm notifications
- View the alarm-related live video or recording



### Video Push

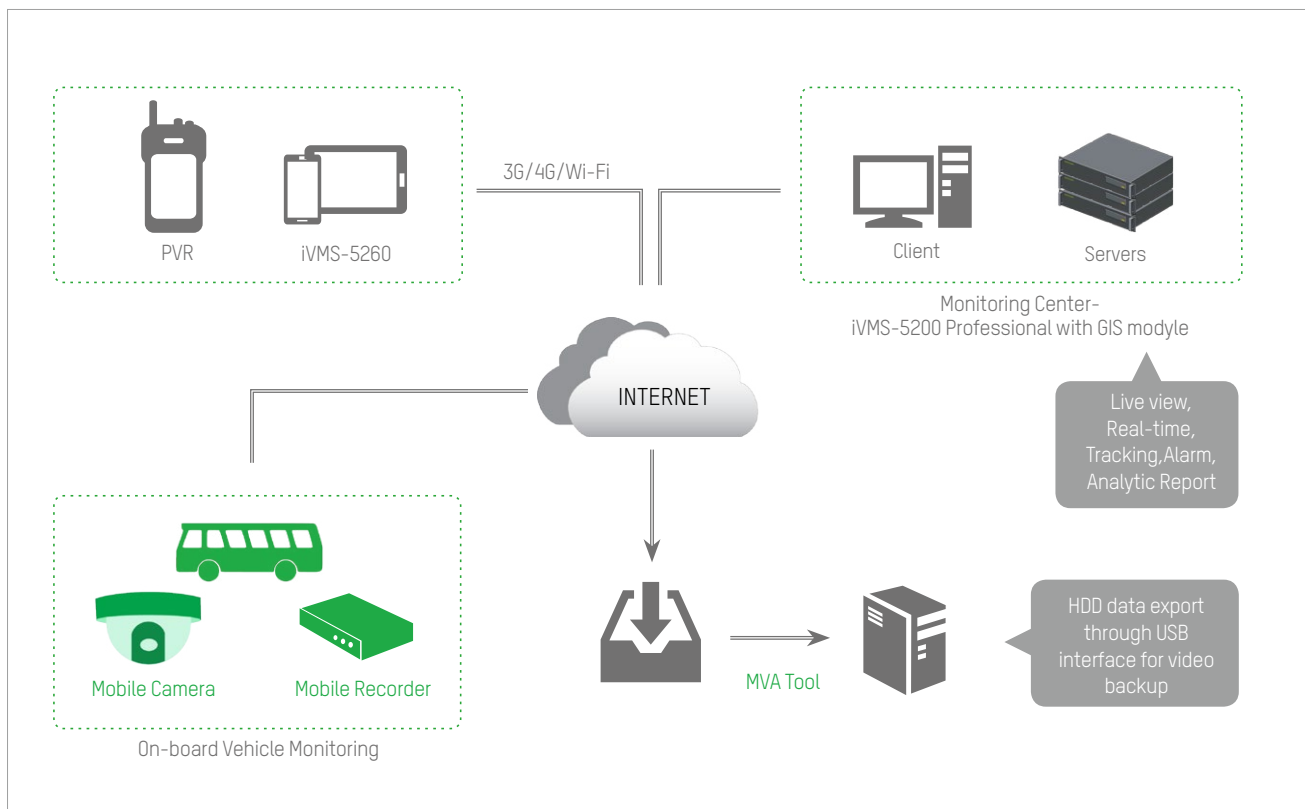
- Video push from your smart phone to control client
- Instant video sharing with other users



### iOS/Android Support

- iOS 6 / iPhone 4S, iPad 2, or later
- Android 2.3.3 / CPU@1GHz, Memory@1GB, or above

## ■ System Architecture Diagram





## A HANDHELD SURVEILLANCE SYSTEM TO HANDLE TOUGH JOBS



DS-6102HLI-T (GW/GLE)  
Portable Video Recorder

Developed specifically for mobile handheld surveillance applications, Hikvision's new Portable Video Recorder (PVR) offers superior video performance and is exceptionally versatile and robust, making it suitable for practically any surveillance job and any environment. The PVR offers ideal support in situations requiring constant communication and control to ensure users' safety even under the most dangerous conditions — cutting-edge technology in a portable package that handles both daily surveillance needs and emergency situations.



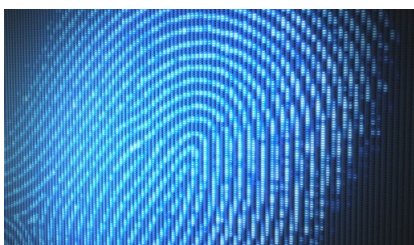
Multifunctional, waterproof, dust-proof, and drop-proof



GPS, 3G, Wi-Fi



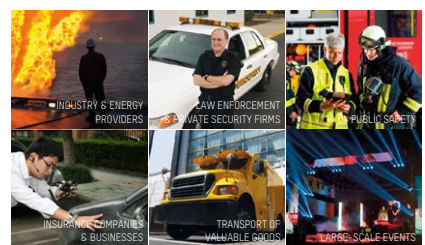
High-resolution camera and extensive range of accessories



Digital fingerprint identification and protected access



Centralized management via the iVMS-5200 platform



A wide variety of applications

MOBILE





### ■ Dubai-Sharjah-Ajman's National Charity School Project, UAE

100 school buses for the Dubai-Sharjah-Ajman's National Charity School are equipped with Hikvision CCTV cameras, DVRs, driver LCD screens. This convenient solution ensures the protection of all pupils and works perfectly in harsh and challenging environments that may include vibration, dust, changing temperatures — and children, as noted by customers!



### ■ Bangkok's Police Force Project, Thailand

Hikvision's mobile security solution helps Bangkok's police force stay ahead of the curve. Hikvision's Portable Video Recorder and Mobile DVR have been placed in squad cars and motorcycle units to achieve a wide array of security benefits for the Thai police force and the larger communities in which they serve.



### ■ Ningbo City Bus Mobile Surveillance Project, China

This installation includes more than 3,600 buses belonging to 14 transportation companies in Ningbo. The Hikvision mobile surveillance solution helps customers solve security problems on their cars, protect their assets, and safeguard passengers and drivers. It can also provide video evidence to security officials for investigation purposes.



### ■ Frankfurt's Light-Rail Stations, Germany

Hikvision megapixel mini dome cameras were installed within support columns as well as next to the emergency button. This action immediately triggers the camera and sends the image in real-time to the control center, thereby alerting security personnel about the situation.



### ■ Supervia Stations Surveillance System, Brazil

Hikvision megapixel dome cameras were installed on train corridor ceilings to provide a clear and vivid view of the thousands of passengers who use this station. The compact design of this camera results in a less visible presence, thereby reducing the possibility of vandalism — either accidental or intentional.

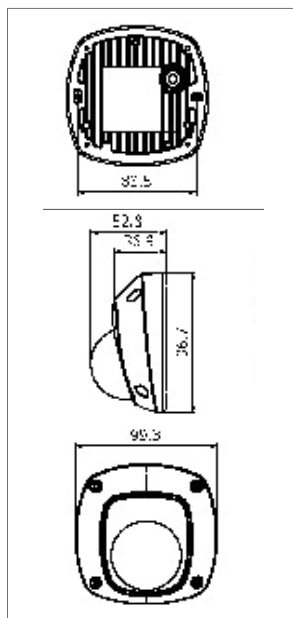




### Key Features

- 1.3/2MP resolution
- Up to 10m IR range
- Reinforcing design
- Vibration-proof
- EN50155 certification
- Various connectors
- Rotate mode

### Dimension (unit: mm)



### Order Models

DS-2CD6510D-IO  
DS-2CD6520D-IO  
DS-2CD6510D-I  
DS-2CD6520D-I

# DS-2CD6510D-I(O)/6520D-I(O)

## 1.3/2MP 1/3"CMOS Mini Dome

	DS-2CD6510D-I(O)	DS-2CD6520D-I(O)
Camera		
Image Sensor	1/3" Progressive Scan CMOS	
Min. Illumination	0.01Lux @(F1.2,AGC ON) , 0 Lux with IR 0.028Lux @(F2.0,AGC ON) ,0 Lux with IR	0.01 Lux @(F1.2,AGC ON), 0 Lux with IR
Shutter Speed	1/25 s to 1/100,000 s	1/3s~1/100,000s
Lens	4mm, angle of view: 73.1° (2.8mm/6mm lens optional)	4mm, angle of view: 63° (2.8mm/6mm lens optional)
Lens Mount	M12	
Day & Night	ICR	
DNR	3D Digital Noise Reduction	
Angle of adjustment	Pan: -30°-30°, Tilt: 0-80°, Rotation: 0-360°	
WDR	Digital WDR	
Compression		
Video Compression	H.264 / MJPEG	
H.264 Type	Baseline Profile / Main Profile / High Profile	
Video Bit Rate	32 Kbps – 8Mbps	
Audio Compression	G.711/G.722.1/G.726/MP2L2	
Audio Bit Rate	64Kbps(G.711) / 16Kbps(G.722.1) / 16Kbps(G.726) / 32-128Kbps(MP2L2)	
Image		
Max. Resolution	1280 × 960	1920 × 1080
Frame Rate	50Hz: 25fps (1280 × 960), 25fps (1280 × 720),60Hz: 30fps (1280 × 960), 30fps (1280 × 720)	50Hz: 25fps (1920*1080,1280 × 960,1280 × 720) 60Hz: 30fps (1920*1080,1280 × 960,1280 × 720)
Image Setting	Rotate mode, Saturation, Brightness, Contrast and sharpness are adjustable by client software or web browser	
Backlight compensation	zone optional	
ROI	Support	
Network		
Network Storage	64G Micro SD/SDHC/SDXC card slot, NAS (Support NFS,SMB/CIFS)	
Alarm Trigger	Motion detection, Dynamic Analysis, Tampering alarm, Network disconnect, IP address conflict, Storage full, storage error	
Protocols	TCP/IP,ICMP,HTTP,HTTPS,FTP,DHCP,DNS,DDNS,RTP,RTSP,RTCP,PPPoE,NTP,UPnP,SMTP,SNMP,IGMP,802.1X,QoS,IPv6,Bonjour	
Video Output	ONVIF,PSIA,CGI,ISAPI	
Audio Input	Flickerless , dual stream, heartbeat, mirror, password protection, video cover, watermark	
Interface		
Communication	-IO model : 1x RJ45 10M/100M Ethernet interface	
	-I model : 1x M12 10M/100M Ethernet interface	
Video	1 Vp-p composite output (75 Ω/BNC)	
Audio	1 built-in mic	
General		
Operating Conditions	-30 °C – 60 °C Humidity 95% or less (non-condensing)	
Power Supply	DC12V±10% / PoE(802.3af)	
Power Consumption	5W MAX	5.5W MAX
IR Range	10 m	
Ingress Protection	IP66	
Impact Protection	IK08	
Dimensions (mm)	99.3×96.7×52.8	
Weight	600 g (1.32 lbs)	

# DS-2CD6510DT-I(O)/6520DT-I(O)

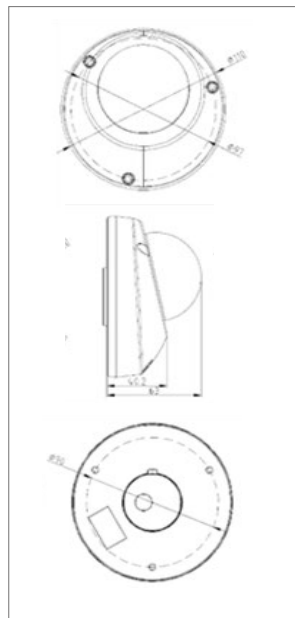
## 1.3/2MP 1/3"CMOS Mini Dome



### Key Features

- 1.3/2MP resolution
- Up to 10m IR range
- Reinforcing design
- Vibration-proof
- EN50155 certification
- Various connectors
- Rotate mode

### Dimension (unit: mm)



### Order Models

DS-2CD6510DT-I  
DS-2CD6520DT-I  
DS-2CD6510DT-IO  
DS-2CD6520DT-IO

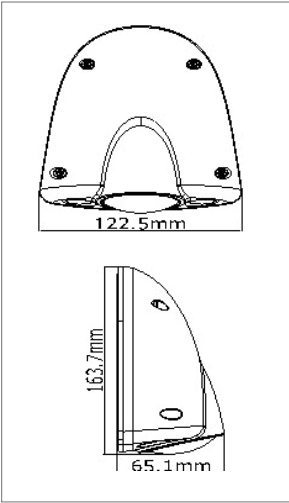
	DS-2CD6510DT-I(O)	DS-2CD6520DT-I(O)
Camera		
Image Sensor	1/3" Progressive Scan CMOS	
Min. Illumination	0.01 Lux @(F1.2,AGC ON), 0 Lux with IR	
Shutter Speed	1/50s-1/100,000s	
Lens	2.8mm, angle of view: 80°(4mm/6mm optional)	
Angle of Adjustment	H: -30°~30°, V: 0°~75°, R: 0°~360°	
Lens Mount	M12	
Day & Night	ICR	
DNR	3D Digital Noise Reduction	
DWDR	Digital Wide Dynamic Range	
Compression		
Video Compression	H.264/MJPEG	
H.264 Type	Base Line Profile/Main Profile	
Video Bit Rate	32Kbps-8Mbps	
Audio Compression	G.711/G.722.1/G.726/MP2L2	
Audio Bit Rate	64Kbps(G.711) / 16Kbps(G.722.1) / 16Kbps(G.726) / 32-128Kbps(MP2L2)	
Image		
Max. Resolution	1280 × 960	1920 × 1080
Frame Rate	50Hz: 25fps (1280 × 960,1280 × 720) 60Hz: 30fps (1280 × 960,1280 × 720)	50Hz: 25fps (1920*1080,1280 × 960,1280 × 720) 60Hz: 30fps (1920*1080,1280 × 960,1280 × 720)
Image Setting	Rotate mode, Saturation, Brightness, Contrast, etc. are adjusted via client or web-browser	
BLC	Regions can be selected	
ROI	Support	
Network		
Network Storage	64G Micro SD/SDHC/SDXC card slot, NAS (Support NFS,SMB/CIFS)	
Intelligent Alarm	Intrusion detection, Line crossing detection, Motion detection, Tampering alarm, Network disconnect, IP address conflict, Storage error	
Protocol Supportable	TCP/IP,ICMP,HTTP,HTTPS,FTP,DHCP,DNS,DDNS,RTP,RTSP,RTCP,PPPoE,NTP,UPnP,SMTP,SNMP,IGMP,802.1X,QoS,IPv6,Bonjour	
Interface protocol	ONVIF,PSIA,CGI,ISAPI	
General	Flickerless, dual stream, heartbeat, mirror, password protection, video masking, watermark	
Interface		
Communication	-IO model : 1x RJ45 10M/100M Ethernet interface	
Audio Input / Output	-I model : 1x M12 10M/100M Ethernet interface	
General		
Working temperature and humidity	-30 °C – 60 °C Humidity 95% or less (non-condensing)	
Power Supply	DC24V, range DC16.8V-DC30V	
Power	4W MAX	
IR Distance	10m	
Ingress Protection	IP54	
Impact Protection	IK08	
Dimensions (mm)	Φ110x63	
Weight	510g	



Key Features

- 1.3/2MP resolution
- Up to 30m IR range
- 3-axis adjustment
- IP68 protection
- Heater and defog
- Vandal-proof housing
- Aviation connector
- -IO: RJ45 connector
- EN50155 certification

Dimension (unit: mm)



Order Models

DS-2CD6510ET-IO  
DS-2CD6520ET-IO

DS-2CD6510ET-IO/6510ET-IO  
1.3/2MP Outer-vehicle Network Camera

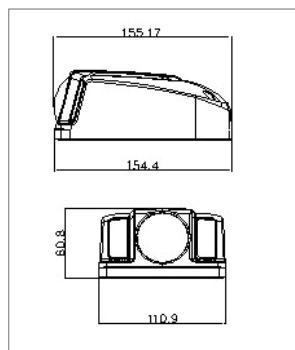
	DS-2CD6510ET-IO	DS-2CD6520ET-IO
Camera		
Image Sensor	1/3" Progressive Scan CMOS	
Min. Illumination	0.01Lux @(F1.2,AGC ON) ,0 Lux with IR 0.028Lux @(F2.0,AGC ON) ,0 Lux with IR	
Shutter Speed	1/3 s to 1/100,000 s	
Lens	6mm@F2.0 Angle of view: 46°	
Lens Mount	M12	
Day &Night	IR cut filter with auto switch	
DNR	3D Digital Noise Reduction	
Angle of adjustment	Pan: -15°-15°, Tilt: 0-30°, Rotation: -90°-90°	
WDR	Digital WDR	
Compression Standard		
Video Compression	H.264 / MJPEG	
H.264 Type	Baseline Profile / Main Profile / High Profile	
Video Bit Rate	32 Kbps – 8Mbps	
Image		
Max. Resolution	1280 × 960	1920 × 1080
Frame Rate	50Hz: 25fps (1280 × 960), 25fps (1280 × 720) 60Hz: 30fps (1280 × 960), 30fps (1280 × 720)	50Hz: 25fps (1920 × 1080,1280 × 960,1280 × 720) 60Hz: 30fps (1920 × 1080,1280 × 960,1280 × 720)
Image Setting	Rotate mode, Saturation, Brightness, Contrast and sharpness are adjustable by client software or web browser	
BLC	Yes, zone optional	
ROI	Support	
Network		
Network Storage	NAS (Support NFS,SMB/CIFS)	
Alarm Trigger	Motion detection, Dynamic Analysis, Tampering alarm, Network disconnect, IP address conflict	
Protocols	TCP/IP,ICMP,HTTP,HTTPS,FTP,DHCP,DNS,DDNS,RTP,RTSP,RTCP, PPPoE,NTP,UPnP,SMTP,SNMP,IGMP,802.1X,QoS,IPv6,Bonjour	
Standard	ONVIF,PSIA,CGI,ISAPI	
General function	Flash-prevention, dual stream, heartbeat, mirror, password protection, video cover, watermark	
Interface		
Communication	1-ch M12 10M / 100M self-adaptive Ethernet port	1 RJ45 10M/100M Ethernet interface
Audio Input / Output	1 audio input / 1 audio output (4 Pin Plug)	1Vp-p composite output (75 Ω/BNC)
General		
Operating Conditions	-40 °C – 70 °C Humidity 95% or less (non-condensing)	
Power Supply	DC12V±10% / PoE(802.3af)	
Power Consumption	9W MAX	
IR Range	30 m	
Impact Protection	IK10	
Ingress protection	IP68	
Dimensions (mm)	163.7 × 122.5 × 65.1	
Weight	900 g (1.98 lbs)	



### Key Features

- 1.3MP resolution
- Up to 30m IR range
- 3-axis adjustment
- IP68 protection
- Heater and defog
- Vandal-proof housing
- Aviation connector
- -IO: RJ45 connector optional
- En50155 certification

### Dimension (unit: mm)



### Order Models

DS-2CD6510-IO

DS-2CD6510-I

## DS-2CD6510-I(O) 1.3MP Outer-vehicle Network Camera

Camera	
Image Sensor	1/3" Progressive Scan CMOS
Min. Illumination	0.01Lux @(F1.2,AGC ON) , 0 Lux with IR 0.028Lux @(F2.0,AGC ON) ,0 Lux with IR
Shutter Speed	1/3 s to 1/100,000 s
Lens	4mm@ F2.0, angle of view: 73.1°(6mm, 46°; 8mm, 35.5°; 12mm, 22° optional)
Lens Mount	M12
Day & Night	IR cut filter with auto switch
DNR	3D Digital Noise Reduction
Angle of adjustment	H: -15°~15°, V: 0°~30°, R: -90°~90°
WDR	Digital WDR
Compression	
Video Compression	H.264 / MJPEG
H.264 Type	Baseline Profile / Main Profile / High Profile
Video Bit Rate	32 Kbps - 8Mbps
Image	
Max. Resolution	1280 × 960
Frame Rate	50Hz: 25fps (1280 × 960), 25fps (1280 × 720), 60Hz: 30fps (1280 × 960), 30fps (1280 × 720)
Image Setting	Rotate mode, Saturation, Brightness, Contrast and sharpness are adjustable by client software or web browser
Backlight compensation	Yes, zone optional
ROI	Support
Network	
Network Storage	NAS (Support NFS,SMB/CIFS)
Alarm Trigger	Motion detection, Tampering alarm, Network disconnect, IP address conflict
Protocols	TCP/IP,ICMP,HTTP,HTTPS,FTP,DHCP,DNS,DDNS,RTP,RTSP,RTCP,PPPoE,NTP,UPnP,SMTP,SNMP,IGMP,802.1X,QoS,IPv6,Bonjour
Standard	ONVIF (PROFILE S,PROFILE G),PSIA,CGI,ISAPI
General function	Flickerless , dual stream, heartbeat, mirror, password protection, video cover, watermark
Interface	
Communication	-IO model : 1 RJ45 10M/100M Ethernet interface
	-I model : 1 M12 10M/100M Ethernet interface
Audio Input / Output	1 Vp-p composite output (75 Ω/BNC)
General	
Operating Conditions	-40 °C - 70 °C
	Humidity 95% or less (non-condensing)
Power Supply	DC12V±10% / PoE(802.3af)
Power Consumption	DC12V: 7W MAX
	PoE: 8.5W MAX
IR Range	20-30 m
Ingress Protection	IP68
Impact Protection	IK10
Dimensions (mm)	Φ155.17 × 110.9 × 60.8mm
Weight	846g

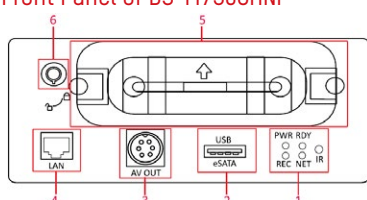




## Key Features

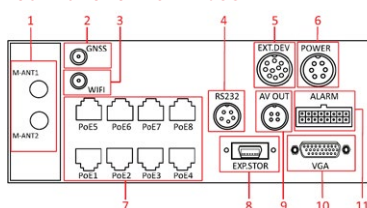
- Supports 8 channels of 1080P IP video input
- 8-channel POE interface
- Pluggable disk box with vibration damping technology
- Two 2.5-inch SATA HDDs / SSDs
- External storage expansion supported
- Pluggable 3G/4G model (optional)
- Built-in Wi-Fi/GPS (optional),
- Built-in G-sensor
- EN 50155 certification

## Front Panel of DS-M7508HNI



1. Indicators
2. AV OUT
3. USB / eSATA
4. LAN
5. Hard disk lock
6. Hard disk box

## Rear Panel of DS-M7508HNI



1. M-ANT1;M-ANT2
2. GNSS
3. Wi-Fi(optional)
4. RS232
5. EXT.DEV
6. POWER
7. PoE1~PoE8
8. EXP. STOR(reserved)
9. AV OUT
10. VGA
11. ALARM

## Order Models

DS-M7508HNI

DS-M7508HNI/GW \*3G

DS-M7508HNI/GW/WI \*3G + Wi-Fi

# DS-M7508HNI

## 8-ch Mobile Network Video Recorder

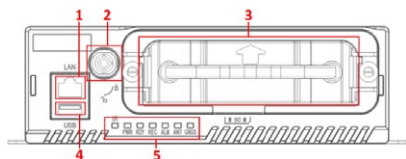
Video/Audio input	
Analog video input	None
IP video input	8-ch, PoE supported
Two-way audio	1-ch, G.722
Incoming bandwidth	160Mbps
Video/Audio output	
Recording resolution	1080P / 720P
VGA output	1-ch Resolution: 1920×1080 / 60Hz, 1280×1024 / 60Hz, 1280×720 / 60Hz, 1024×768 / 60Hz
CVBS output	3-ch Aviation plug (1.0 Vp-p, 75 Ω); resolution: PAL: 704 × 576, NTSC: 704 × 480
Audio output	3-ch Aviation plug (linear level,600 Ω)
Decoding	
Live view	8-ch
Synchronous playback	1-ch
Hard disk	
Type	Two 2.5-inch SATA HDDs / SSDs, external storage expansion supported (reserved) Note: If two HDDs / SSDs are installed, the disk size should be of 7mm.
Capacity	Up to 2*1TB capacity supported
Installation	Pluggable
Protection	3-generation hard disk box
Backup	Hard disk box, USB interface and eSATA interface supporting data backup
Wireless Network	
Dialing	3G (WCDMA), dual SIM card mode reserved
Wi-Fi (optional)	802.11 b/g/n supported, 2.4GHz
Positioning	
GNSS	GPS
External interface	
Alarm in	7-ch high/low level signal input; 1-ch pulse signal input; 3mm connector
Alarm out	2-ch; 3mm connector
Network interface	1; RJ45; 10M/100M self-adaptive Ethernet interface
PoE	8; RJ45
Antenna interface	SMA interfaces: two for 3G (one for reserved), one for Wi-Fi (optional) and one for GPS
Serial interface	RS-232, RS-422, aviation plug
eSATA interface	1
USB interface	1 × USB2.0
EXP.STOR	Connectable to external HDD for storage expansion (reserved)
SIM card	2, standard SIM card slots (one for reserved)
General	
Operating system	Linux
Operating method	IR remote control
Power supply	Input: +8- +36VDC; Output: 12VDC/2A, 5VDC/1A
Consumption	Standby: Max. 0.5W; Full load: Max.20W (without IP camera or hard disk)
Working temperature	-10 °C ~ +55 °C (14 °F ~ 131 °F)
Working humidity	10%-90%
Dimensions (W×D×H)	245.8mm×202mm×86.87mm
Weight	Aprox.3.3kg (without hard disk)



### Key Features

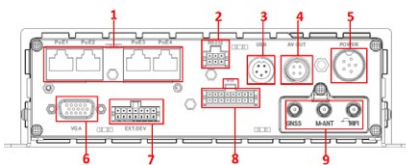
- Supports 4 channels of 1080P IP video input
- 4-channel POE interface
- Pluggable disk box with vibration damping technology
- 2x pluggable 2.5-inch HDDs / SSDs
- 1x SD/SDHC card slot
- Pluggable 3G/4G/Wi-Fi module (optional)
- Standard 1DIN dimensions
- EN50155 certification

### Front Panel of DS-M5504HNI



1. LAN
2. Hard disk lock
3. Hard disk box
4. USB
5. Indicators

### Rear Panel of DS-M5504HNI



1. PoE1 to PoE4
2. RS232
3. USB
4. AV OUT
5. POWER
6. VGA
7. EXT. DEV
8. I/O
9. GNSS
10. M-ANT
11. Wi-Fi

### Order Models

DS-M5504HNI

DS-M5504HNI/GW \*3G

DS-M5504HNI/GW/WI \*3G + Wi-Fi

# DS-M5504HNI

## 4-ch Mobile Network Video Recorder

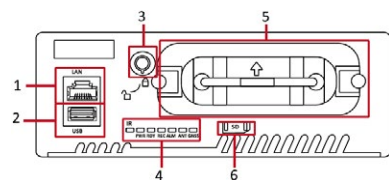
	DS-M5504HNI	DS-M5504HNI/GW	DS-M5504HNI/GW/WI
Video/Audio input			
IP video input	4-ch		
IP audio input	4-ch		
Video/Audio output			
VGA output interface	1-ch VGA interface		
VGA output resolution	1920 × 1080/60Hz, 1280 × 1024/60Hz, 1280 × 720/60Hz, 1024 × 768/60Hz		
CVBS output resolution	PAL: 704 × 576, NTSC: 704 × 480		
CVBS output interface	1-ch aviation plug (1.0 Vp-p, 75 Ω)		
	1-ch RS-422 interface (EXT.DEV interface)		
Video/Audio Decoding			
Video compression	H.264		
Audio compression	G.711		
Resolution	1080p and 720p		
Frame rate	25 fps (PAL)/30 (NTSC)		
Playback	Local playback: single channel playback; Web playback: single channel playback and multi-channel synchronous playback.		
Hard disk			
Hard disk	Hard disk		
Wireless Network			
3G Dialing	Not supported	1 external antenna	
Wi-Fi	Not supported	1 external antenna	
Positioning			
GNSS interface	GPS and optional BDS (BeiDou Navigation Satellite System). 1 positioning antenna.		
External interface			
Sensor-in	4 high/low level signal inputs; 1 pulse signal input (reserved)		
Alarm input	3 high/low level signal inputs		
Alarm output	2 relay signal outputs		
Network interface	1 RJ45 10M/100M self-adaptive Ethernet interface.		
Serial interface	1 RS-232 interface. 1 RS-422 interface, including reserved auto announcer interface.		
USB interface	2 USB2.0 interfaces.		
POE supported	4 RJ45 10M/100M self-adaptive PoE interfaces.		
Two-way audio	1-ch, G. 722		
General			
Operating system	Embedded Linux operation system		
Operating method	Local operation, IR remote control, Web operation		
Power supply	Input: +8 to +36 VDC; Output: +12 VDC/2 A, +5 VDC/1 A		
Consumption	Standby: Max. 0.5W; Full load: Max.20W (without IP cameras or hard disks)		
Working temperature	- 20° C to + 60° C (- 4° F to + 140° F) with industrial-class HDD. Note: for enterprise-class HDD, when the temperature < 0° C, the heater for hard disk is needed.		
Working humidity	10% to 95%		
Dimensions (W×D×H)	1 DIN: 178 mm × 170 mm × 50 mm (7.01" × 6.69" × 1.97")		
Weight (without hard disks)	< 1.6 kg (3.53 lb)		



## Key Features

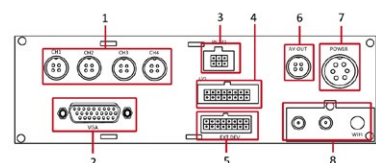
- Supports 4 channels of WD1 video input
- Pluggable disk box with vibration damping technology
- 1x 2.5-inch HDD/SSD
- Pluggable 3G/4G/Wi-Fi module (optional)
- Standard 1UIN dimensions
- EN50155 certification

## Front Panel of DS-M5504HMI



1. LAN
2. USB
3. Hard disk lock
4. Indicators
5. Hard disk box
6. SD card slot

## Rear Panel of DS-M5504HMI



1. CH1-CH4
2. VGA
3. RS232
4. I/O
5. EXT.DEV
6. AV OUT
7. POWER
8. Pluggable Module

## Order Models

DS-M5504HMI  
DS-M5504HMI/GW \*3G  
DS-M5504HMI/GW/WI \*3G + Wi-Fi

# DS-M5504HMI

## 4-ch Mobile Analog Video Recorder

Video/Audio input				
Analog video input	4-ch			
	Aviation plug (1.0 Vp-p, 75 Ω), PAL / NTSC self-adaptive			
Audio input	4-ch			
	Aviation plug (linear level, 1kΩ)			
IP video input	None			
Video/Audio output				
VGA output	1-ch			
	Resolution: 1920×1080, 1280×1024, 1280×720, 1024×768			
CVBS output	1-ch;			
	Aviation plug (1.0 Vp-p, 75 Ω); resolution: PAL: 704 × 576, NTSC: 704 × 480			
Audio output	1-ch; aviation plug (linear level, 600 Ω)	DS-M5504HMI-SD	DS-M5504HMI-SD/GW	DS-M5504HMI-SD/GW
Encoding/Decoding parameters				
Video compression	H.264	Video/Audio input		
	Main stream: WD1 / 4CIF / 2CIF / CIF	4-ch; Aviation plug (1.0 Vp-p, 75 Ω), PAL / NTSC self-adaptive		
Encoding resolution	Sub stream: CIF / QCIF	4-ch; Aviation plug (linear level, 1kΩ)		
	Video/Audio output			
Frame rate	PAL: 1-25fps; NTSC: 1-30fps	VGA output		
Video bitrate	32Kbps-2Mbps; custom (Max.: 4Mbps)	1-ch; Aviation plug (1.0 Vp-p, 75 Ω); resolution: PAL: 704 × 576, NTSC: 704 × 480		
Audio compression	G.711	Audio output		
Audio bitrate	16Kbps	1-ch; aviation plug (linear level, 600 Ω)		
Stream type	Video, Video & Audio	Encoding/Decoding parameters		
Dual stream	Supported	Video compression	H.264	
		Encoding resolution	Main stream: 4CIF / 2CIF / CIF	
Hard disk	Type	Sub stream: CIF / QCIF		
		Video/Audio input		
Type	One 2.5-inch SATA HDD/SSD	32Kbps-2Mbps; custom (Max.: 4Mbps)		
Capacity	Up to 1TB capacity	Audio compression		
Installation	Pluggable	Audio bitrate		
Protection	3-generation hard disk box	16 Kbps		
Backup	USB interfaces on hard disk box and device front panel supporting data backup	Video, Video & Audio		
Wireless Network				
3G	WCDMA (2G module optional)	2 × SD / SDHC		
Wi-Fi (optional)	802.11 b/g/n supported, 2.4GHz	Up to 64GB for each card		
Positioning	GPS; BDS (optional)	Installation		
GNSS	GPS; BDS (optional)	Pluggable		
External interface				
Two-way audio	G.722	3G Dialing	Not support	WCDMA
Alarm in	7-ch high/low level signal input; 1-ch pulse signal input; 3mm connector	Wi-Fi	Not support	802.11 b/g/n
Alarm out	2-ch; 3mm connector	Positioning		
Network interface	1; RJ45; 10M/100M self-adaptive Ethernet interface	GNSS		
Antenna interface	SMA interfaces	External interface		
Serial interface	RS-232, RS-485	Two-way audio		
USB port	1 × USB2.0	G.722		
SIM card	1, standard SIM card slot	Alarm input		
SD/SDHC card	1, standard SD / SDHC card slot	2-ch relay signal output		
General				
Operating system	Linux	Antenna interface		
Operating method	IR remote control	SMA interfaces on pluggable module including one for 3G, one for Wi-Fi and one for GPS		
Power supply	Input: +8~ +36VDC; Output: 12VDC/2A, 5VDC/1A	Serial interface		
Consumption	Standby: Max. 0.5W Full load: Max. 2.1W	RS-232, RS-422		
Working temperature	-10 °C ~ +55 °C	USB port		
Working humidity	10%~90%	2 × USB2.0		
Dimensions (W×D×H)	178mm×170mm×50mm	SIM card		
Weight	Aprox.1.6kg (without SD card)	1, standard SIM card slot		
		SD card		
		2, standard SD / SDHC / SDXC card slot		
		General		
		Operating system		
		Linux		
Weight	Aprox.1.6kg (without SD card)	Operating method		
		Mouse, IR remote control and Web control		
		Power supply		
		Input: +8~ +36V DC; Output: 12VDC, 5VDC		
		Consumption		
		≤ 10 W		
Weight	Aprox.1.6kg (without SD card)	Working temperature		
		-25 °C ~ +65 °C (-13 °F ~ 149 °F)		
		Working humidity		
		10% to 95%		
Dimensions (W×D×H)	184mm × 44mm × 129mm (7.24" × 1.73" × 5.08")	Dimensions (W×D×H)		
		184mm × 44mm × 129mm (7.24" × 1.73" × 5.08")		
Weight (without SD card)	Approx. 1.6kg (3.53 lb)	Weight (without SD card)		
		Approx. 1.6kg (3.53 lb)		

# DS-M5504HMI-SD

4-ch Mobile Analog Video Recorder (SD card storage)



## Key Features

- Supports 4 channels of WD1 video input
- 2× SD / SDHC / SDXC card slot
- Pluggable 3G/4G/Wi-Fi module (optional)
- Standard 1DIN dimensions
- EN50155 certification

## Front Panel of DS-M5504HMI-SD



- |              |        |
|--------------|--------|
| 1. SD1 & SD2 | 5. IR  |
| 2. OFF / ON  | 6. USB |
| 3. POWER     | 7. LAN |
| 4. RECORD    |        |

## Rear Panel of DS-M5504HMI-SD



- |          |            |
|----------|------------|
| 1. M-ANT | 6. AV OUT  |
| 3. Wi-Fi | 7. CH1-CH4 |
| 4. USB   | 8. POWER   |
| 5. RS232 |            |

## Order Models

- DS-M5504HMI-SD,
- DS-M5504HMI-SD/GW \*3G
- DS-M5504HMI-SD/GW/WI \*3G + Wi-Fi





## Key Features

- Supports 4 channels of 720P video input
- 4-ch POE interface
- Pluggable disk box with vibration damping technology
- 2x pluggable 2.5-inch HDDs / SSDs
- Pluggable 3G/4G model (optional)
- Built-in Wi-Fi/GPS (optional)
- Built-in G-sensor
- EN50155 certification

## Front Panel of DS-M7504HMI-SD



1. LAN
2. USB
3. PWR/RDY/REC/GNSS/ANT/ALM
4. IR
5. Hard Disk Lock
6. Hard Disk Box

## Rear Panel of DS-M7504HMI-SD



1. Wi-Fi
2. CH1 to CH4
3. AV OUT
4. USB
5. POWER
6. GNSS
7. VGA
8. I/O
9. RS232-1
10. EXT.DEV
11. RS232-2
12. M-ANT 1
13. M-ANT 2

## Order Models

DS-MP7504,  
DS-MP7504/GW\*3G  
DS-MP7504/GW/WI\*3G + Wi-Fi

# DS-MP7504

## 4-ch Mobile Analog Recorder

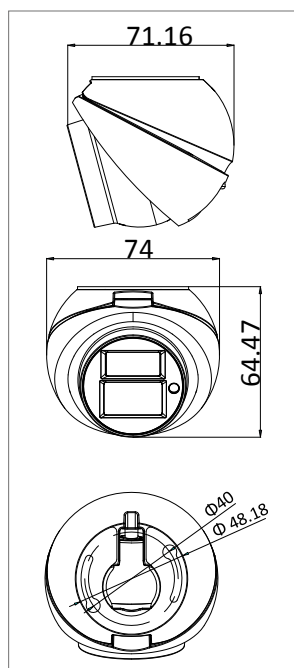
	DS-MP7504	DS-MP7504/GW	DS-MP7504/GW/WI
Video/Audio input			
Analog video input	4-ch; Aviation plug (1.0 Vp-p, 75 Ω)		
Audio input	4-ch; Aviation plug (linear level, 1kΩ)		
Video/Audio output			
Video Output	VGA: 1-ch; 1920 × 1080p/60Hz, 1280 × 1024/60Hz, 1280 × 720/60Hz, 1024 × 768/60Hz CVBS : 1-ch aviation plug (1.0 Vp-p, 75 Ω) and 1-ch RS-422; PAL: 704 × 576, NTSC: 704 × 480		
Audio output	1-ch; aviation plug (linear level,600 Ω)		
Encoding/Decoding parameters			
Video compression	H.264		
Encoding resolution	Main stream: 720p/WD1/4CIF/CIF Sub-Stream: CIF/QCIF		
Frame rate	PAL: 1 to 25fps; NTSC: 1 to 30fps		
Audio compression	G.711		
Stream type	Video, Video & Audio		
Dual stream	Supported		
Hard Disk			
Type	2 × 2.5 inch hard disk (HDD/SSD)		
Capacity	Up to 1T for each		
Wireless Network			
3G Dialing	Not supported	1 external antenna; WCDMA module	
Wi-Fi	Not supported	802.11 b/g/n supported, 2.4GHz	
Positioning			
GNSS	1 positioning antenna; GPS (Global Positioning System) and BDS (BeiDou Navigation Satellite System) are selectable		
External interface			
Two-way audio	G.722		
Sensor-in	4 high/low level signal inputs		
Alarm input	3-ch high/low level signal input		
Alarm output	2-ch relay signal output		
Network interface	1 × 10M/100M self-adaptive RJ45 Ethernet interface		
Serial interface	2 × RS-232, 1 × RS-422		
USB port	1 × standard USB 2.0 in front panel; 1 × aviation plug USB 2.0 in in rear panel		
SIM card	1 SIM/UIM card slots		
General			
Operating system	Linux		
Operating method	Mouse, IR remote control, and Web control		
Power supply	Input: 8 to 36 VDC; Output: 12 VDC/1 A, 5 VDC/1 A		
Consumption	≤ 20 W		
Working temperature	-25° C to +70° C (-13° F to 158° F)		
Working humidity	10% to 90%		
Dimensions (W×D×H)	236 × 73 × 210mm [9.29 × 2.87 × 8.27"]		
Weight (without HDDs/SSDs)	Approx. 3 kg (6.61 lb)		



### Key Features

- HD720P resolution
- Up to 20m IR range
- 2.1/2.8/3.6mm fixed lens
- Built-in microphone (-S)
- Aviation connector
- IP68 rated

### Dimension (unit: mm)



### Order Models

DS-2CS58C0T-IT  
DS-2CS58C0T-ITS

# DS-2CS58C0T-IT(S)

## 1MP HDTVI Mobile Camera

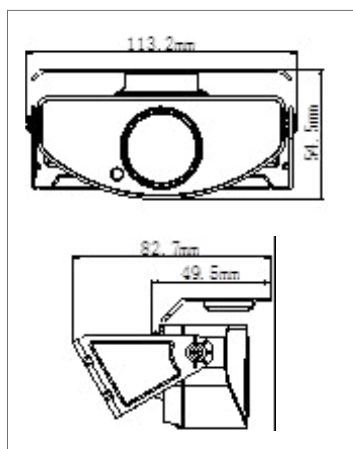
	DS-2CS58C0T-IT	DS-2CS58C0T-ITS
Camera		
Image Sensor	1.0MP Progressive Scan CMOS	
Resolution	1280(H)×800(V)	
Min. Illumination	0.1Lux @ (F1.2, AGC ON), 0 Lux with IR	
Shutter Time	1/25(30)s to 1/50,000s	
Lens	2.1mm(2.8mm/3.6mm optional)	
Lens Mount	M12	
Angle Adjustment	Pan:0° - 50°; Tilt:0° - 50°; Rotation:0° - 360°	
Day & Night	Electronic	
Horizontal Definition	950TVL	
Synchronization	Internal	
Video Output	Aviation port	
Audio Input	-	1-ch audio interface(Aviation plug)
Audio Output	-	720p@25fps/30fps
Frame Rate	720p@25fps/30fps	
Function	Mirror(PTZ control)	
General		
Working Temperature/ Humidity	-40℃ - 75℃ Humidity 90% or less (non-condensing)	
Power Supply	DC6V-16V	
Power Consumption	3.5W MAX	
IR Range	20-30m	
Protection Level	IP68	-
Dimension(mm)	74×64.47×71.16	
Weight	400g	



### Key Features

- HD720P resolution
- Up to 20m IR range
- 2.1/2.8/3.6mm fixed lens
- Aviation connector
- IP68 rated

### Dimension (unit: mm)



### Order Models

DS-2CS58C0T-ITR

# DS-2CS58C0T-ITR

## 1MP HDTVI Mobile Camera

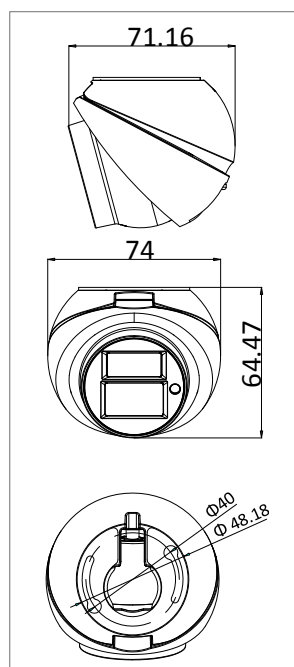
Camera	
Image Sensor	1.0Mega Progressive Scan CMOS
Signal System	1280(H)×800(V)
Min. Illumination	0.1Lux @ (F1.2,AGC ON),0 Lux with IR
Shutter Time	1/25(30)s to 1/50,000s
Lens	2.1mm(2.8mm/3.6mm optional)
Lens Mount	M12
Angle Adjustment	Tilt: 90°
Day & Night	Electronic
Horizontal Definition	950TVL
Synchronization	Internal
Video Output	Aviation port
HD Video Output	1 Turbo HD output, in line with HDTVI standard
Function	Mirror(PTZ control)
Frame Rate	720p@25fps/30fps
Function	Mirror(PTZ control)
General	
Working Temperature/ Humidity	-40°C~80°C, Humidity 90% or less (non-condensing)
Power Supply	DC6V~16V
Power Consumption	3.5W MAX
IR Range	20~30m
Protection Level	IP68
Dimension(mm)	89.6×59.1
Weight	400g



### Key Features

- 720TVL resolution
- Up to 20m IR range
- 2.1/2.8/3.6mm fixed lens
- Built-in microphone (-S)
- Aviation connector
- IP68 rated

### Dimension (unit: mm)



### Order Models

DS-2CS58C2P(N)-IT

DS-2CS58C2P(N)-ITS

# DS-2CS58C2P(N)-IT(S)

## 720TVL Analog Mobile Camera

	DS-2CS58C2P(N)-IT	DS-2CS58C2P(N)-ITS
Camera		
Image Sensor	1.0Mega Progressive Scan CMOS	
Signal System	PAL/NTSC	
Resolution	1280(H)×800(V)	
Min. Illumination	0.1Lux @ (F1.2,AGC ON),0 Lux with IR	
Shutter Time	1/25(30)s to 1/50,000s	
Lens	2.1mm (2.8mm, 3.6mm optional)	
Lens Mount	M12	
Angle Adjustment	Pan:0° - 50°; Tilt:0° - 50°; Rotation:0° - 360°	
Day & Night	Electronic	
Horizontal Definition	720TVL	
Synchronization	Internal	
Video Output	Aviation port	
Audio Input	-	Built-in Mic
Audio Output	-	1-ch audio interface(Aviation plug)
S/N Ratio	>62dB	
General		
Working Temperature/ Humidity	-40℃-75℃, Humidity 90% or less (non-condensing)	
Power Supply	DC6V-16V	
Power Consumption	3.5W MAX	
IR Range	20-30m	
Protection Level	IP68	-
Dimension(mm)	74×64.47×71.16	
Weight	400g	



# DS-2CS58C2P(N)-ITR

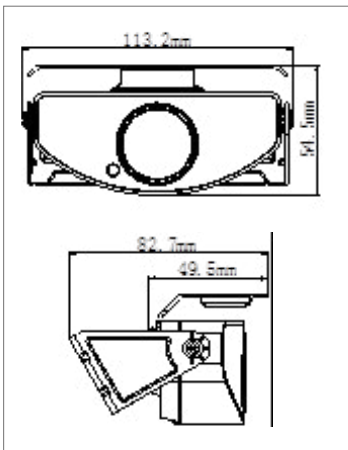
## 720TVL Analog Mobile Camera



### Key Features

- 720TVL resolution
- Up to 20m IR range
- 2.1/2.8/3.6mm fixed lens
- Aviation connector
- IP68 rated

### Dimension (unit: mm)



### Order Models

DS-2CS58C2P(N)-ITR

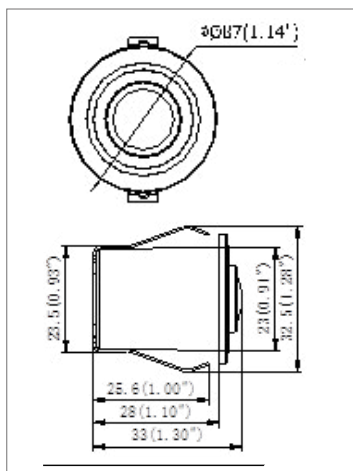
Camera	
Image Sensor	1.0Mega Progressive Scan CMOS
Signal System	PAL/NTSC
Effective Pixels	1280(H)×800(V)
Min. Illumination	0.1Lux @ (F1.2,AGC ON),0 Lux with IR
Shutter Time	1/25(30)s to 1/50,000s
Lens	2.1mm(2.8mm,3.6mm optional)
Lens Mount	M12
Angle Adjustment	Tilt: 90°
Day & Night	Electronic
Horizontal Definition	720TVL
Synchronization	Internal
Video Output	Aviation port
S/N Ratio	>62dB
CVBS Output	1Vp-p Composite Output(75Ω/BNC)
General	
Working Temperature/ Humidity	-40°C~80°C, Humidity 90% or less (non-condensing)
Power Supply	DC6V~16V
Power Consumption	3.5W MAX
IR Range	20~30m
Protection Level	IP68
Dimension(mm)	89.6×59.1
Weight	400g



### Key Features

- Clear and vivid image
- 0.1Lux@(F1.4,AGCON), 0 Lux with IR
- IP68 protection level, high reliability

### Dimension (unit: mm)



### Order Models

DS-2CS5802P-C,  
DS-2CS5802N-C

# DS-2CS5802P(N)-C

## Analog Fisheye Mobile Camera

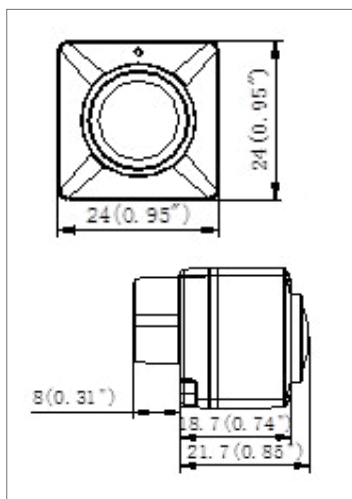
Camera	
Image Sensor	1/4" Progressive Scan CMOS
Signal System	PAL/NTSC
Effective Pixels	728(H)×560(V)
Min. illumination	0.1Lux@(F1.4,AGCON)
Shutter Time	1/25(1/30)-1/50,000sec
Lens	1.15mm@F2.0
	Angle of view: 120°
Lens Mount	M12
Day & Night	Color
Horizontal Resolution	480TVL
Synchronization	Internal synchronization
Video Output	1Vp-p Composite Output(75Ω/BNC, aviation plug)
S/N Ratio	>60dB
General	
Working Temperature/ Humidity	-30 °C - 70 °C (-22 °F - 158 °F) Humidity 90% or less (non-condensing)
Power Supply	6-16V DC
Power Consumption	Max. 0.5W
Ingress Protection	IP68
Dimension	33×32.5mm(1.30" × 1.28")
Weight	50g(0.11lb)



### Key Features

- Clear and vivid image
- 0.1Lux@(F1.4,AGCON) , 0 Lux with IR
- IP68 protection level, high reliability

### Dimension (unit: mm)



### Order Models

DS-2CS5802P-F,  
DS-2CS5802N-F

# DS-2CS5802P(N)-F

## Analog Fisheye Mobile Camera

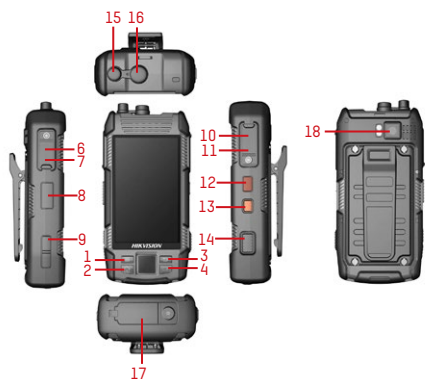
Camera	
Image Sensor	1/4" Progressive Scan CMOS
Signal System	PAL/NTSC
Effective Pixels	728(H)×560(V)
Min. illumination	0.1Lux@(F1.4, AGCON)
Shutter Time	1/25(1/30)~1/50,000sec
Lens	1.15mm@F2.0
	Angle of view: 120°
Lens Mount	M12
Day & Night	Color
Horizontal Resolution	480TVL
Synchronization	Internal synchronization
Video Output	1Vp-p Composite Output(75Ω/BNC, aviation plug)
S/N Ratio	>60dB
General	
Working Temperature/ Humidity	-30 °C ~ 70 °C (-22 °F ~ 158 °F) Humidity 90% or less (non-condensing)
Power Supply	6-16V DC
Power Consumption	Max. 0.5W
Ingress Protection	IP68
Dimension	24×24×29.7mm(0.94"×0.94"×1.17")
Weight	50g(0.11lb)



### Key Features

- 3.5" LCD touchscreen
- Supports video/audio I/O
- Up to 1080p video recording
- Up to 13MP built-in HD camera
- Supports external camera
- Supports up to 32GB Micro SD card
- Supports 3G/4G/Bluetooth/Wi-Fi connection, GPS, G-sensor
- 2000mAh embedded battery
- IP66 rated protection
- Fingerprint identification

### Physical Interfaces of DS-6102HLI-T



- |                      |                                |
|----------------------|--------------------------------|
| 1. Menu              | 12. Power                      |
| 2. Home page         | 13. Alarm                      |
| 3. Return            | 14. Capture                    |
| 4. Record            | 15. External camera interface  |
| 5. Fingerprint area  | 16. External antenna interface |
| 6. Headset interface | 17. Camera                     |
| 7. Micro HDMI port   | 18. Extension base interface   |
| 8. PTT               |                                |
| 9. Audio+, Audio-    |                                |
| 10. Power supply     |                                |
| 11. USB interface    |                                |

### Order Models

DS-6102HLI-T

## DS-6102HLI-T

### Portable Video Recorder

Performance	
Operating system	Android 4.1.2
CPU	cortex-A9 Dual-Core 1.2 G Hz
RAM	1GB
ROM	32GB
Video/Audio input	
Video input	2-ch, built-in HD camera and HD external video input (optional)
Audio input	Host MIC, Wired MIC, Bluetooth headset
Video/Audio output	
LCD	WVGA (800*480), 3.5"
Audio output	Wired or Bluetooth headset; Speaker
Video/Audio output	Micro HDMI
Encoding/Decoding Parameters	
Video compression	H.264
Encoding resolution	For both built-in camera and external camera: 1080P / 720P / D1 / VGA / QVGA.
Decoding performance	1080P, 25fps
Capture	
Built-in HD camera	1-ch, 13 Megapixels (4208*3120)
External camera	1-ch, 2 Megapixels (1600*1200)
Storage (optional)	
Type	Micro SD (TF) Card
Capability	Max. 32GB
UI	
Touch screen	Capacitive Touch screen
Button	Power on/off, Menu, Home page, Return, Record, Alarm, Capture, Audio+/Audio-, PTT
Network	
3G/4G mobile networks	FDD-LTE/WCDMA;
Bluetooth	BT V4.0
WIFI	802.11a/b/g/n (2.4G/5.8G)
External interface	
Headset interface	1, for the wired headset
Mini USB interface	1, USB2.0
External camera interface	1, install the external camera if needed.
External antenna interface	1, install the external 3G/4G antenna when the 3G slave SIM card/4G SIM card is used.
Extension base	Provide serial port, USB, RJ45
General	
Fingerprint identification	Support
SD-KEY	Support
Digital certificate	Support
Electronic compass	Support
GPS	Built-in
Sensor	G-sensor, Temperature sensor
Flash light	High Brightness LED
Battery	7.4V/2000mAh
Protection level	IP66, 1.5 meters of fall protection
Standby time	60h
Service time	>4 hours
Working condition	Temperature:-10 ~ +50 ; humidity:10%~90%
Dimensions (H*W*D)	147.5*71*30mm
Weight	382g (with the battery)





# iVMS-5200 Professional

## Video Management Platform

### Key Features

- Intuitive GUI
- Seamless integration with access control, POS, building management, etc.
- Free DDNS and customizable service
- Multiple storage and database solutions
- Accessible ownership cost
- ANPR management module
- Business intelligence module
- Mobile management module

CMS	Performance Specification
Number of Connected Channels per System	Maximum2048
Number of Connected Encoding Devices or Mobile Video Recorders per System	Maximum1024
Number of Connected Mobile Terminals per System	Maximum64
Number of Connected Alarm Inputs per System	Maximum2048
Number of Connected Alarm Outputs per System	Maximum2048
Control Client plus Parking System Control Software	Maximum100
Web Clients per System	Maximum16
Mobile Clients per System	Maximum64
Web Managers per System	Unlimited
Number of Users	Unlimited
Number of Roles	Maximum64
User Permission Levels	Maximum100
Number of Storage Servers per System	Maximum32
Number of Stream Media Server per System	Unlimited
POS Systems Access	Maximum100
Number of parking lots	Maximum20
Number of entrance & exit	Maximum100
Saving time of Passing Vehicle Info.	Maximun6 months
Number of Blacklist and Whitelist	Maximun5000
Number of Entrance & Exit for Each Parking Lot	Maximun10
Number of Cameras for Video Wall Client	Maximun2048
Storage Server	Performance Specification
Number of Cameras per Storage Serverm	Maximum64
Video Storage Efficiency	Maximum128Mbps
Picture Storage Efficiency	Maximum10 pictures per second
Storage Space of Single Storage Server	Maximum100TB, Minimum 100GB
Stream Media Server	Performance Specification
Video Input Bandwidth per Stream Media Server	Maximum200 ×2Mbps
Video Output Bandwidth per Stream Media Server	Maximum200×2Mbps

## ACCESSORIES

## ACCESSORIES FOR MOBILE RECORDER



DS-1300HMI  
7-inch LCD Monitor



DS-1530HMI  
Alarm button



DS-1350HM  
Voice intercom unit



WD10SPCX  
WD 2.5" 1TB HDD

## ACCESSORIES FOR PVR



DS-MH1031-BT-HD1080  
External camera



DS-MH1031-JZ-HD1080  
External camera



DS-MH1031-NK-HD1080  
External camera