

iVMS-4200

Overview

iVMS-4200 is a versatile video management software for the DVRs, NVRs, IP cameras, encoders, decoders, etc. It provides multiple functionalities, including real-time live view, video recording, remote search and playback, file backup, etc., for the connected devices, meeting the needs of small and medium-sized projects.

With its flexible deployment schemes and easy-to-use operations, iVMS-4200 client software is widely applied to the surveillance project of financial, public security, military, telecommunications, transport, electricity, education, water conservancy industries, etc.

Model

iVMS-4200

Main Features

General

- Management and viewing interface for IP cameras, IP domes, encoders, DVRs, NVRs, etc.
- Application in local area network and wide area network
- E-map function
- User permission management
- Embedded web server supporting web browsing function
- Friendly user interface providing easy operations

Network

- NTP protocol supported
- HiDDNS, IP Server, PeanutHull and DynDNS for dynamic IP connection
- Two-way audio and broadcast function
- Search online devices automatically (SADP)

Live View

- Different view modes available in live view and playback
- Standard screen layout: 1, 4, 6, 8, 9, 13, 16, 25, 32, 36, 64;
- Wide screen layout: 4, 6, 7, 9, 12, 16, 24, 36, 48
- Main/auxiliary screen live view
- Manual recording and picture capture supported

PTZ Control

- Local and remote PTZ control supported
- Control keyboard and USB joystick supported
- Auxiliary focus function
- 3D positioning function

Record

- Remote manual recording supported
- Schedule recording, event recording supported

Playback

- Local and remote playback supported
- Up to 16-ch synchronous playback supported
- Instant playback supported
- Event playback supported

Alarm Management

- Camera Linkage for tampering alarm/video loss alarm
- Manually turn on/off alarm output
- PIR alarm, wireless alarm and emergency alarm supported
- Multiple linkage actions supported

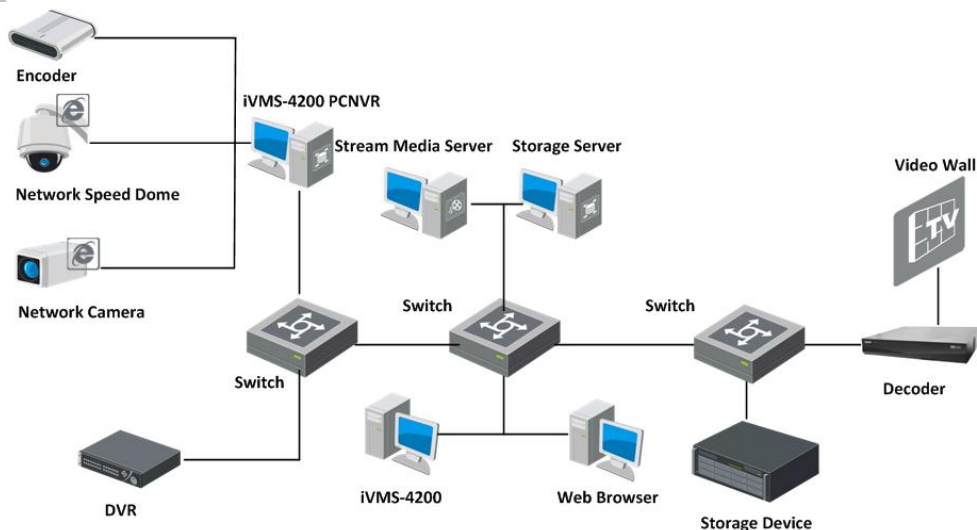
Video Wall Display

- Multi-screen display mode supported
- Video wall display for playback supported
- Alarm triggered video wall display supported

Backup

- Import and export configuration file
- Log search and backup

Typical Application



Specifications

Model		iVMS-4200
Operating System		Microsoft Windows 7/Windows 2008 (32/64 bit) Windows 2003/Windows XP(32 bit)
Client	User	Up to 51 users supported
	Encoding Device	Up to 256 encoding devices supported
	Group	Up to 256 groups supported
	Channel	Up to 64 channels can be imported to each group; Up to 1024 channels can be imported to all groups
	Storage Server	Up to 16 storage servers supported
	Stream Media Server	Up to 16 stream media servers supported
	Decoding Device	Up to 64 decoding devices supported
	Live View	Up to 64-ch live view supported at a time
	Auxiliary Screen Preview	Up to 3 auxiliary screens supported for preview
	Playback	Up to 16-ch playback supported at a time; Up to 16-ch synchronous playback supported
	E-map	Up to 256 E-maps can be added
	Hot Region	Up to 255 hot regions can be added
	Hot Spot	Up to 64 camera hot spots can be added; Up to 64 alarm input hot spots can be added
	PTZ Control	Up to 256 presets / 1 pattern / 16 patterns can be added; Each patrol supports up to 32 presets
Storage Server	User	Up to 32 users supported
	Record Performance	Up to 64-ch×2Mbps supported at a time
	VOD Performance	Up to 64-ch×2Mbps supported at a time
	iVMS-4200 Client	No limit for the amount of iVMS-4200 connected to the storage server.
Stream Media Server	Input/output stream	Up to 64-ch input video stream supported; Up to 200-ch output video stream supported

Recommended Configurations

PC Configuration Bitrate (single P-frame)	The maximum amount of accesses supported for live view channel				
	CPU: Intel Core i7-3770K 3.50GHz Memory: 4GB Graphic card: AMD Radeon HD 6700 Series Operating System: Windows 7 (32 bit)	CPU: Intel Core i5-2320K 3.00GHz Memory: 4G Graphic card: NVIDIA GeForce GT 430 Operating System: Windows 7 (32 bit)	CPU: AMD Phenom II X4 965 3.40GHZ Memory: 4G Graphic card: ATI Radeon HD 5770 Series Operating System: Windows XP SP3	CPU: Intel Core 2 Quad Q8200 2.33GHZ Memory: 4G Graphic card: NVIDIA GeForce 9600GT Operating System: Windows XP SP3	CPU: Intel Core 2 Duo E8400 3.00GHZ Memory: 2G Graphic card: ATI Radeon HD 4800 Series Operating System: Windows XP SP3
(352*288)*768K*25	64	64	64	63	48
(640*480)*1.5M*25	57	50	48	25	22
(704*576)*2M*25	49	38	36	19	17
(960*576)*2M*25	36	26	27	12	12
(1280*720)*6M*25	23	18	16	8	7
(1280*960)*6M*25	20	15	13	6	5
(1600*1200)*8M*25	12	8	8	3	3
(1920*1080)*9M*25	12	7	7	3	3
(2048*1536)*13M*25	8	6	6	2	2
(2560*1920)*7M*6	6	6	6	5	4

Note: The parameters recommended above are for reference only.