

SOLARIX CATEGORY 6

Unshielded Patch Panels

1 Gbps

350 MHz

SX24-6-UTP-BK



Number of Ports	12, 24 and 48 x RJ45
Life Cycle	1,000 plug insertions
Contact Material	50 µ gold and 100 µ nickel
IDC Block	Dual 110/Krone 8p8c
IDC Block Life Cycle	200 terminations
Wire	AWG 26 – 22
Other material	FR according to UL94-0
Colour	Black
Units	1U and 2U
Height	44 mm /88 mm
Width	484 mm
Storage Temperature	-40 to +70 °C
Operation Temperature	-10 to +60 °C
Max. Humidity Operation	93 %

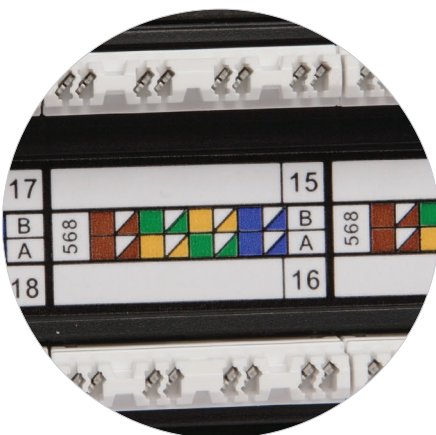
Solarix Category 6 unshielded patch panels are designed to exceed the ANSI/TIA 568C.2, ISO/IEC 11801, and EN 50173 performance specifications providing usable bandwidth up to 350 MHz. These high-density panels are available in 12- through 48-port versions and feature enhanced front and rear labeling for easy circuit identification. Solarix Category 6 unshielded panels support both T568A and T568B wiring configurations using an easy to read colour-coded wiring labels. These panels are constructed for maximum durability and feature a fully enclosed, 6-port module design, which provides flexibility and protection of printed circuitry during termination. A newly designed RJ45 contact configuration provides enhanced plug to jack connection integrity for superior reliability. Rear termination is made quick and easy using a 4-pair dual 110/Krone type connector compatible with industry standard 110 or Krone termination tools. These Solarix panels are supplied in black colour.

Part No.

Description

SX12-6-UTP-BK	19" Patch Panel Solarix Category 6 UTP 12 x RJ45 Black 1U
SX24-6-UTP-BK	19" Patch Panel Solarix Category 6 UTP 24 x RJ45 Black 1U
SX48-6-UTP-BK	19" Patch Panel Solarix Category 6 UTP 48 x RJ45 Black 2U

SX24-6-UTP-BK



SX48-6-UTP-BK

