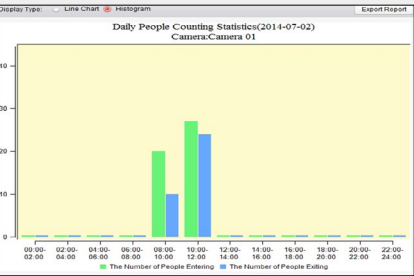


**SMART.
OPEN.
COMPLETE.**

iVMS-5200 Pro
VMS PLATFORM

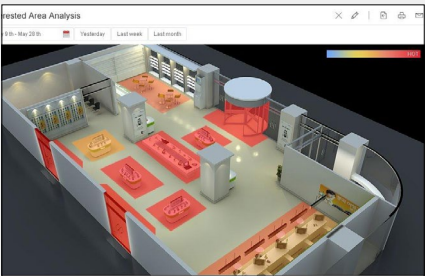
iVMS-5200 Professional

SMART



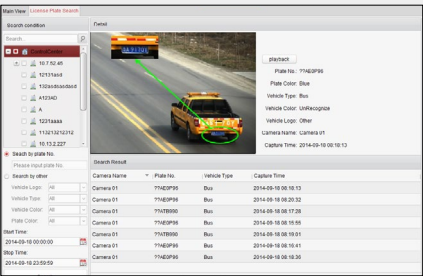
People counting

Accurately counts the visitors that enter / exit your retail stores, shopping malls, etc., and helpfully provides daily, monthly or annual statistics reports of the visitor traffic, thus contributing to measure your marketing scientifically and help you make effective business decisions.



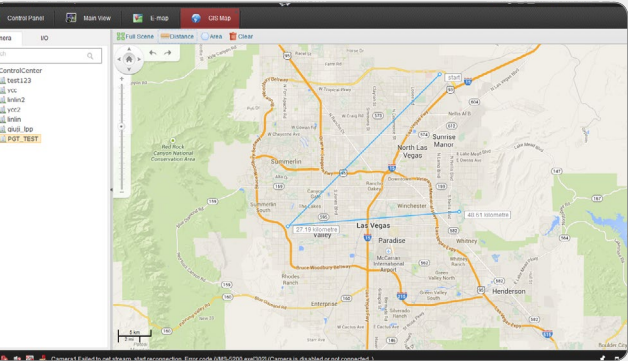
Heat map

Generates user-friendly and intuitive heat maps, graphically representing the individual values contained in matrix data, such as where the visitors have spent the time, using different colors, so as to visually show you the most welcome and less-popular fields.



License plate recognition

Automatically captures and reads the license plates of the passing vehicles in real-time, and records the information such as plate number, plate color, vehicle type, vehicle logo and date-time for later retrieval, being widely applied for parking regulations enforcement, electronic toll collection, traffic flow control, etc.



New Experience of GIS Map

Accurate and True Map Information:

Enables users to load the real-time map information, such as google map, to accurately show the geographical information of your actual application scene and locate the spot quickly. You can also customize the map function according to your requirements.

Easy-to-use Map Operation:

Enables users to add various spots on the map to provide a convenient and efficient way for live view and handling the alarm information via the map.system events to provide instant notification and verification, and greatly optimizes the overall event handling process.



High Performance and Availability

1024 channels in one server:

Innovative design reduces the need for multiple servers and operating costs. This new design features a tremendous capacity to handle even the most challenging surveillance requirement.

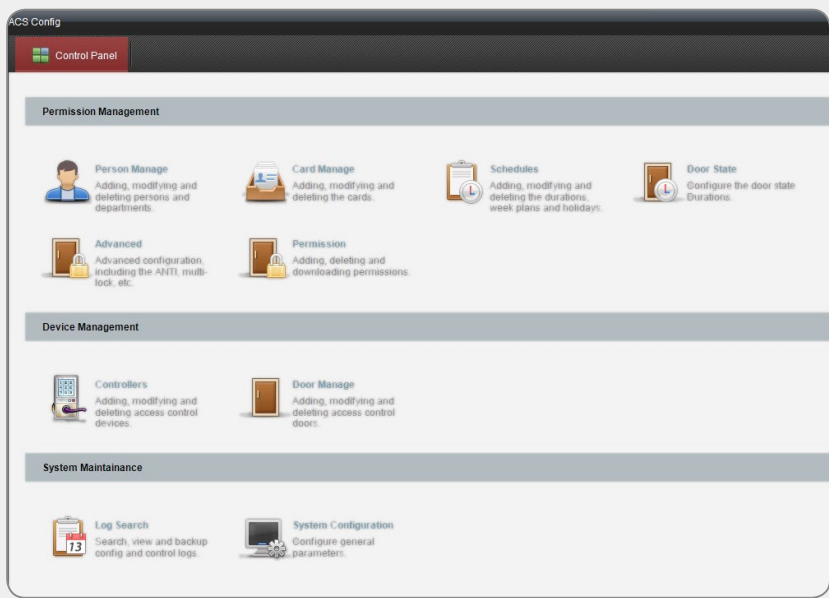
4 views per workstation:

User-defined and flexible view options provide more detailed information, making the ability to initially catch and react to events a far quicker process.

Dynamic stream selection:

The video stream quality automatically switches from low to high definition resolution, thereby reducing the load on the network, as well as the burden on the workstation.

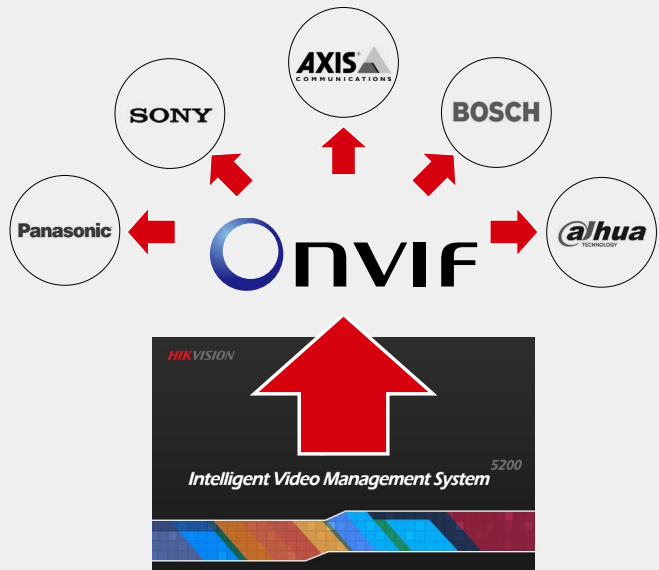
OPEN



Access Control

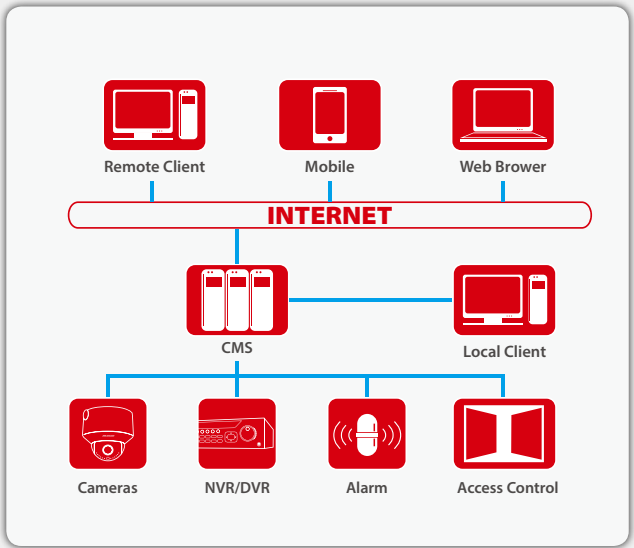
The access control system is a system of checking permission of door access. It allows you to manage permissions centrally, from a single location and without any headaches. It offers an enhanced integration with CMS so you can easily manage video alarm events with either system.

Our Access Control Configuration software is browser-based, so you can access your system anytime, from anywhere. You can also assign door privileges and manage employee or visitor credentials quickly and easily, never needing to be tied to a specific workspace.



Open architecture

The iVMS-5200 Pro allows users to easily integrate with other leading CCTV equipment to provide customers maximum security options.



Existing system integration

Distributed architecture design makes it flexible and easy to interconnect with various types of security and business systems, providing endless possibilities and adaptations

iVMS-5200 Professional

COMPLETE

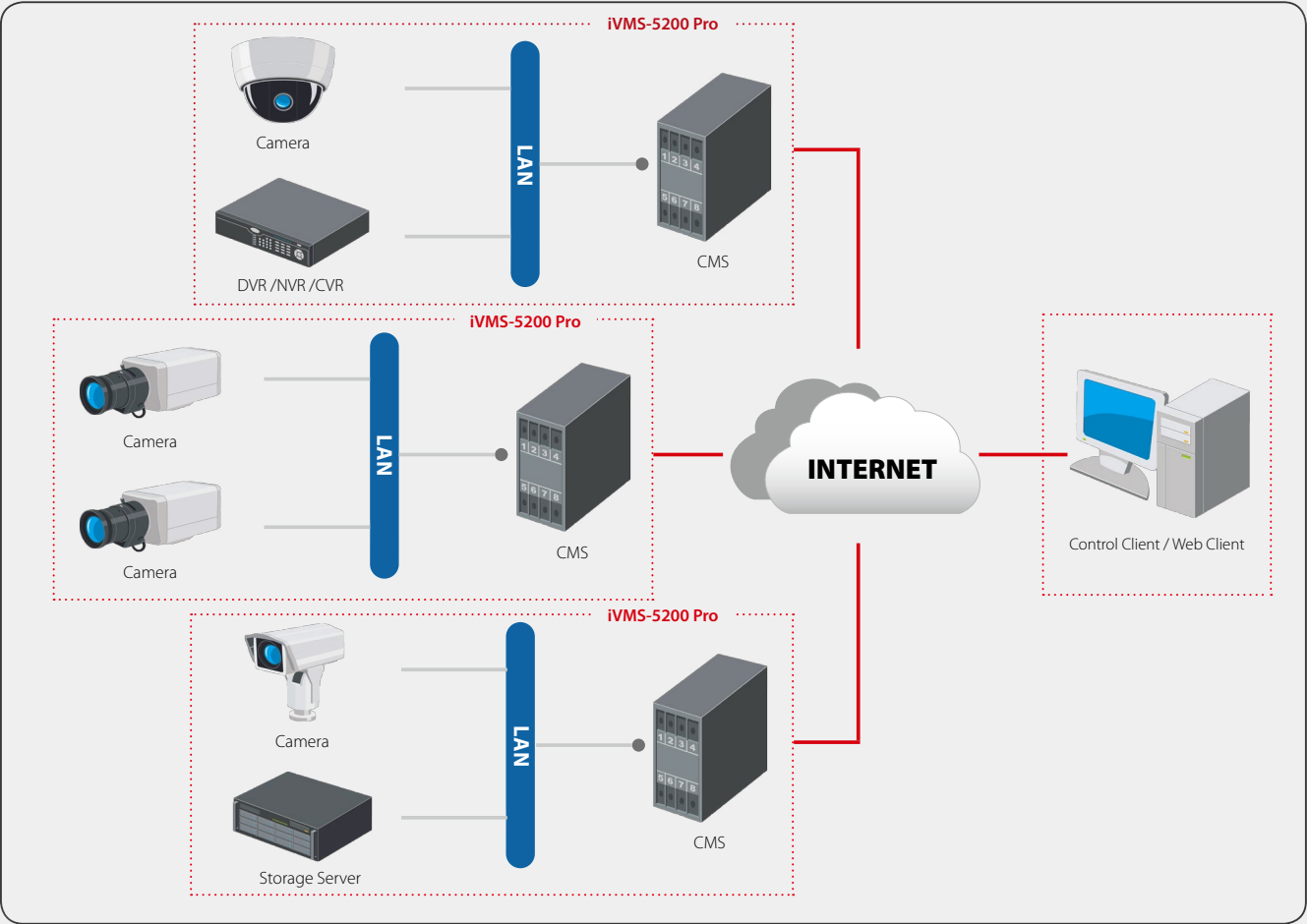
Complete solution of CCTV products and software

The iVMS-5200Pro offers most comprehensive video surveillance solutions in the market. The software fully supports the Hikvision devices, including DVRs, NVRs, Cameras and PTZ domes etc. Moreover, various 3rd party products can also be connected to the iVMS-5200Pro via ONVIF. No matter new site installation or expand existing system, it is the complete solution customized for all your security needs and can easily make it a safer place.



Complete solution of small to large size business

iVMS-5200Pro is designed for small and middle business and its maximum capacity is up to 1024 channels. You want more? Our cascading solution help you increase the capacity to 3072 channels, provide the function of central management, also each iVMS-5200Pro can manage its own resource via permission control. The flexible operation and optimized bandwidth make user have a better experience.



Retail Store

With video surveillance goes to IP, the need of Loss Protection for retail owners turns from traditional analog to real time video monitoring 24/7. Meanwhile, the fast development of online shopping is a very severe impact on traditional retail industry, which makes retail owners change their operating mode to focus on customers' shopping behavior to stimulate the need of business intelligent. The Hikvision iVMS-5200pro is the ideal solution to make this happen.

• Concern •

Loss PreventionTransactionBusiness Intelligent

• Required Feature •

Seamless SurveillancePOS
People CountsHeat Map



Parking lot

The Hikvision iVMS-5200pro is also widely used for application of parking lot. This solution provides the low light technology and the real time HD video recording in a dim lighting condition. In addition, by containing the audio detection functionality, the solution can trigger alarms and transfer it to the command center when an exceptional voice occurs. The License Plate Recognition module is also available, which makes the cars registration and taking evidence convenient.

• Concern •

Burglars SurveillanceCriminal AlertParking Lot Management

• Required Feature •

Anti Low Light surveillanceFull HD
Shouting Alert SolutionsLPR



Residential

As an open platform, the Hikvision iVMS-5200pro integrates video surveillance, access control, and alarm for building management. This solution can centrally manage various events, such as perimeter intrusion detection, fire alarm and smoking alarm etc., and push the alarm information to the security guard, thus to enhance the efficiency of reaction and ensure the residents' safety.

• Concern •

Building ManagementBurglars SurveillanceCriminal Alert

• Required Feature •

Open PlatformIntrusion Detection
24/7 RecordingBehavior Analysis



Banking

Banking is critical industry and requires higher demand of security system than other industries. Hikvision is an expert of offering sophisticated solution for Chinese banking industry and knows well the needs of this industry. The Hikvision iVMS-5200pro not only perfectly satisfies the needs of IT security and high availability of banking, but also can connect major IP cameras in the market as an open platform, as well as provide the SDK to ensure the compatibility and stability between different systems. Furthermore, Hikvision offers complete solutions for ATM applications.

• Concern •

IT SecuritySystem AvailabilityATM

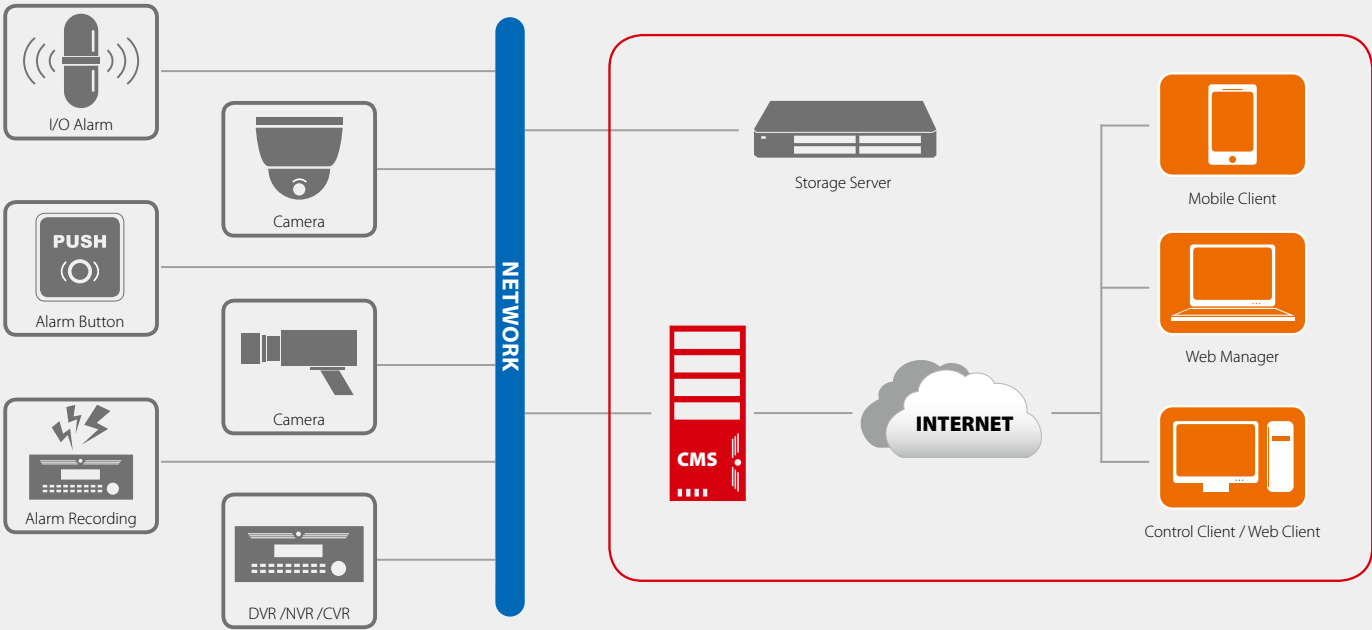
• Required Feature •

AES EncryptionOpen Platform
Server FailoverATM solutions

iVMS-5200 Professional

Multi Link
Up to 1024 cameras

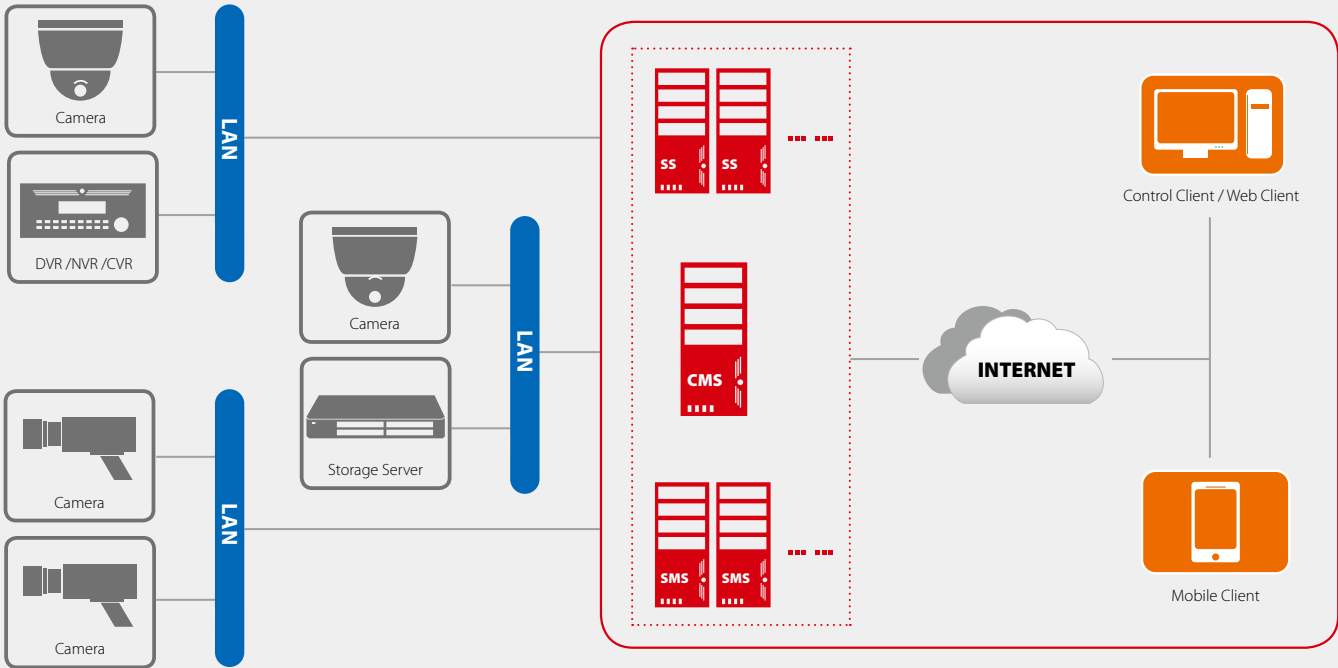
- Suitable for small to mid-size business
- Cost-effective
- ONVIF and third-party IP camera support



iVMS-5200 Enterprise

Unlimited Devices
Unlimited Cameras

- Designed for large distributed installations
- 24/7 surveillance
- Reliable scalability



Products/ Version	iVMS-5200 Professional	iVMS-5200 Enterprise
Type of deployment	Single-server	Central management and distributed sites
Number of connected Devices per system	1024	Unlimited
Number of supported cameras per system	1024	Unlimited
Number of online Clients per system	16	Unlimited
Maximum numbers of Users	64	Unlimited
User permission levels	100	100
Maximum number of storage Servers per system	16	Unlimited
Maximum number of cameras Per storage server	128	200
Maximum bandwidth of Video input per stream media server	200*2Mbps	200*2Mbps
Maximum bandwidth of Video Output per Stream Media Server	200*2Mbps	200*2Mbps
ONVIF/PSIA compliant device support	√	√
GIS integration	√	√

Hardware/Software Recommendation	
Server	
CPU	Intel E5-2620 and above
Memory	DDR3 8GB
Network	1000Mbps×2
OS	Windows Server 2008 R2 SP1 and above
Database	PostgreSQL / Oracle
Client	
CPU	Intel Core i5 750 and above
Memory	DDR3 4GB
Network	Intel/ RealTek 1000Mbps
GPU	Geforce GTX 460 and above
Control Client OS	Windows 7 / Windows 8
Web Client / Web Manager	IE8 and above / Firefox 3.5 and above / Chrome 8.0 and above



Hikvision USA

Tel: +1-909-895-0400

Email: sales@hikvisionusa.com

Hikvision Europe

Tel: +31-23-5542770

Email: saleseuro@hikvision.com

Hikvision Middle East

Tel: +971-4-8847628

Email: salesme@hikvision.com

Hikvision Russia

Tel: +7-812-313-19-63

Email: salesru@hikvision.com

Hikvision India

Tel: +91-22-28469900

Email: sales@pramahikvision.com

Hikvision Italy

Tel: +39-0438-6902

Email: info.it@hikvision.com

Hikvision France

Tel: +33(0)1-85-330-450

Email: info.fr@hikvision.com

Hikvision Spain

Tel: +34 91 737 1655

Email: info.es@hikvision.com

Hikvision Singapore

Tel: +65 6684 4718

Email: sg@hikvision.com

Hikvision Oceania

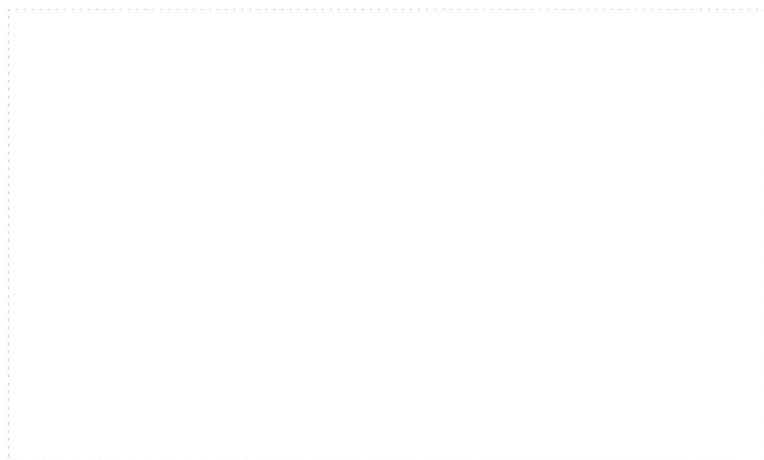
Tel: +61 2 8599 4233

Email: salesau@hikvision.com

Hikvision Hong Kong

Tel: +852-2151-1761

Email: sales@hikvision.com



Headquarters

No.555 Qianmo Road, Binjiang District, Hangzhou, China

Tel: +86-571-8807-5998 Fax: +86-571-8993-5635

Email: overseasbusiness@hikvision.com

Technical Support: support@hikvision.com